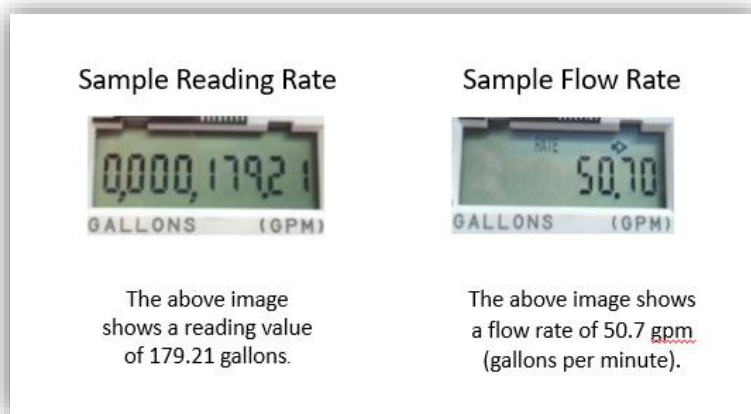


Neptune E-Coder Model:

To read the water meter register, expose the solar panel to sunlight or shine a bright light, (i.e. flashlight or cell phone flashlight), and the display will activate. When activated, the LCD display will first show a manufacturing configuration:



The screen will then begin to flash between “reading” and “rate” in gallons.



Reading – This reading shows all of the water that has passed through the meter in its lifetime, and is measured in gallons. This is the reading used for billing purposes. Charges are based on units of 100 gallons of water used, so be sure to look for the decimal point when reading. You can calculate how much water is used in a given period by recording the reading at the beginning of the period and again at the end of the period. The total water used during that period is calculated as follows:

End Reading – Beginning reading = Total gallons of water used during that period.

Example:

Initial Reading for January 1, 2020: 9,234.14 gallons

Final reading for February 1, 2020: 11,438.23 gallons

Gallons of water used during the example period:

$11,438.23 - 9,234.14 \text{ gallons} = 2,204.09 \text{ gallons used.}$

For billing purposes, the gallons used should be divided by 100, for a total usage of 22 during this period.

$2,204.09 \text{ gallons used} / 100 = 22 \text{ usage}$



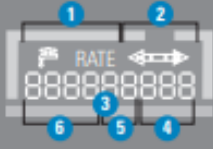
Flow Rate – The “rate” is the amount of water (in gallons per minute) that is passing through the meter at the moment. The rate can be used for leak detection. If all water in the building is shut off and a rate is observed on the meter, this means that water is flowing through the meter. Since all water is turned off, there must be a leak somewhere between the meter and the shut off valve.

There is a leak indicator faucet icon (see below) built into this meter, that will either be on solid or flashing, indicating that there has been a leak detected.



The **solid** faucet indicates a continuous leak occurrence over the last 24 hours. Check the last digit on your screen to see if it is incrementing. If so, check your interior and exterior faucets, the valves in your toilets, and look around the exterior of your home for signs of surface water.

The **flashing** faucet indicates an intermittent leak occurrence over the past 24 hours. Check your interior and exterior faucets and valves in your toilets to see if leakage is occurring.

	FLOW INDICATOR Shows the direction of flow through the meter: ON Water in use. OFF Water not in use. Flashing Water is running slowly. (-) Reverse flow. (+) Forward flow.
	LEAK INDICATOR Displays a possible leak: OFF No leak indicated. Flashing Intermittent leak indicates that water has been used for at least 50 of the 96 15-minute intervals during a 24-hour period. On Continuously Indicates water use for all 96 15-minute intervals during a 24-hour period.
RATE	RATE OF FLOW Average flow rate is displayed every twelve seconds on LCD display.
	LCD DISPLAY Nine-digit LCD displays the meter reading in billing units of measure: U.S. gallons, cubic feet, Imperial gallons, or cubic metres. 1 E-CODER basic reading/customary 6-digit remote reading 2 Customary sweep hand digits 3 E-CoderPLUS reading (8-digit remote reading) 4 Testing units used for diagnostics 5 Extended reading units 6 Customary billing units